



# Hi-Def Azure Media

## Defined animal free media available with or without carbon source

*E. coli* reaches OD's of 9-14 upon overnight growth compared to 2-4 in M9 media & 5-7 in MOPS EZ Rich Defined Medium Kit (Neidhardt\*)

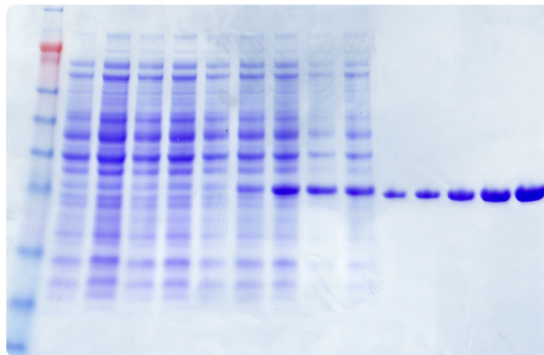
### Teknova's Hi-Def Azure Media is ideal for:

#### Protein expression & purification

- Tight Control
- Reproducible results
- Isotopic Labeling
- Autoinduction with IPTG  $\geq 0.03$ mm  
Lactose  $\geq 0.01$ mm

**Cat. No. 3H5000 ... 1000mLs**  
(without carbon source)

**Cat. No. 3H5250 ... 250mLs**  
(without carbon source)



*E. coli*: BI21 (DE3)/PET302/NT-HIS/GFP in Azure supplemented w/ 0.1% glucose, 0.5% glycerol at 30°C 300rpm.

lane1: marker, lane 2: 0 IPTG, lanes 3-10: 0.001, 0.002, 0.004, 0.008, 0.016, 0.032, 0.064, 0.128mm IPTG, respectively, lanes 11-15: 0.1, 0.2, 0.4, 0.6, 0.8mg purified GFP, respectively

\* Reference: Neidhardt, F. C., P. L. Bloch, and D. F. Smith. 1974. Culture medium for enterobacteria. *J Bacteriol.* 119:736-47

Toll Free  
1-855-242-0011  
www.teknova.com

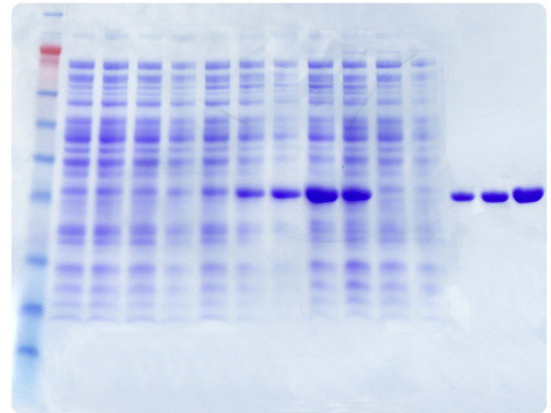
**TEKNOVA**  
science matters



# Cinnabar High Yield *E.coli* Growth Media

*For Plasmid DNA and Protein production*

- Complex animal free media
- *E. coli* reaches OD's of 40-65 upon overnight growth compared to OD's of 3-5 in LB media & OD's of 15-25 in Terrific Broth
- Protein expression & purification  
Autoinduction with 0.01-0.1 mM IPTG
- Available in large scale quantities
- Suitable for Fermentors and Bioreactors



*IPTG autoinduction of E.coli BL21(DE3)/PET302/NT-His/GFP in Cinnabar supplemented w/0.8% glucose, at 30°C 300 rpm  
lane 1: marker, lane 2: IPTG, lanes 3-12: 0.001, 0.002, 0.004, 0.008, 0.016, 0.032, 0.064, 0.128, 0.256, 0.512mm IPTG, respectively; lanes 13-15: 0.2, 0.4, 0.8mg purified GFP.*

**Cat. No. 3C8488 ... 1000mLs**

**Cat. No. 3C8482 ... 250mLs**

Toll Free  
1-855-242-0011  
[www.teknova.com](http://www.teknova.com)

**TEKNOVA**  
science matters